

BVH ARCHITECTURE

ARCHITECT'S SUPPLEMENTAL INSTRUCTION

PROJECT:	La Vista City Center - MU Bldg - South/15	PROJECT NO.:	F16132
CONTRACTOR:	Overland Construction	DATE:	08/08/2017
REFERENCE:	Structural Revision	ASI NO.:	#1

The Work shall be carried out in accordance with the following supplemental instructions issued in accordance with the Contract Documents without change in Contract Sum or Contract Time. Proceeding with the Work in accordance with these instructions indicates your acknowledgment that there will be no change in the Contract Sum or Contract Time.

DRAWINGS

1. In reference to RFI #1; Revise HSS6x6x5/8 Column and associated Beam line East of Gridline C-2 per attached Detail 13/A5.2 and drawings S201 and S203.

If you have questions, please call.

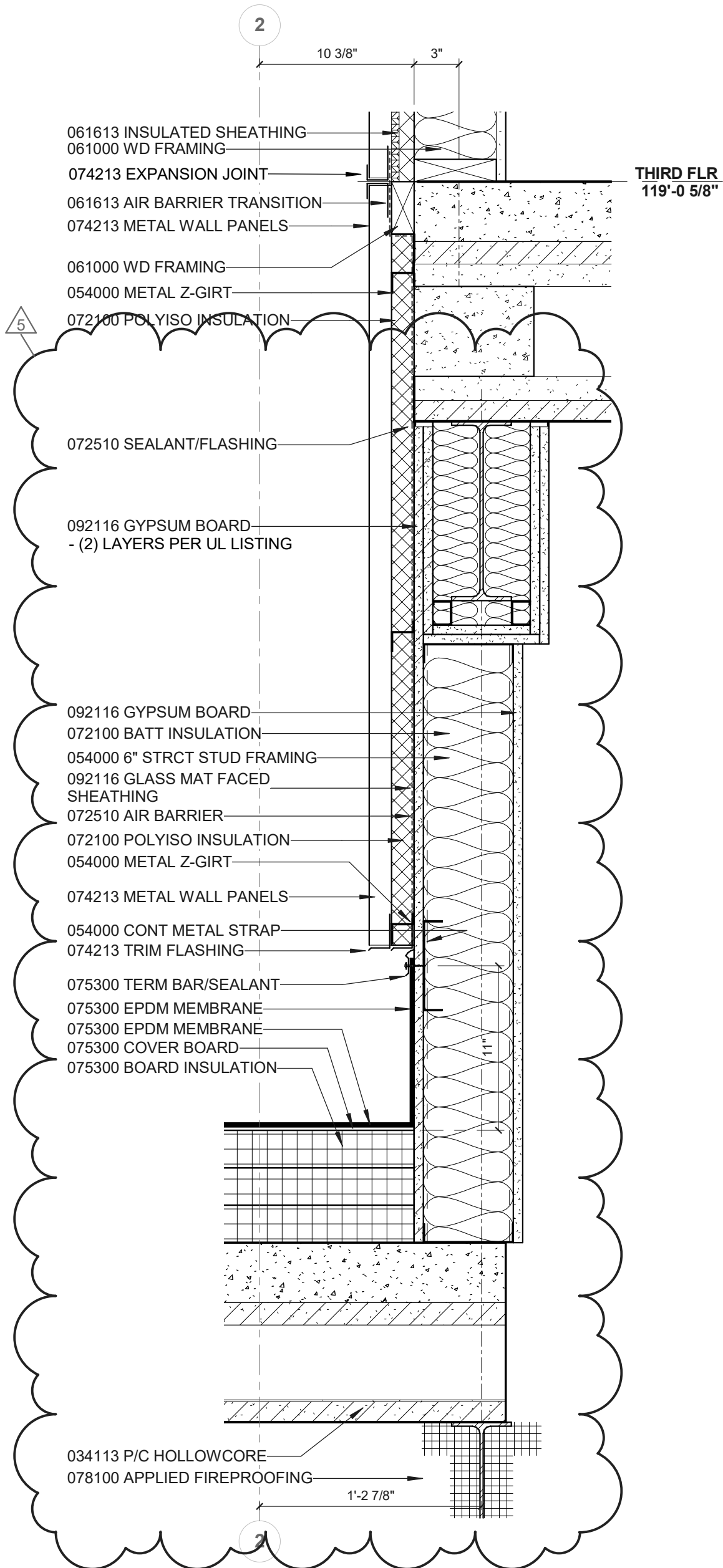
Bryan Solko AIA

BVH Architecture

ARCHITECTS SUPPLEMENTAL INSTRUCTIONS

PROJECT: LA VISTA CITY CENTRE
MIXED USE - LOT 15

PROJECT NO.: F16132

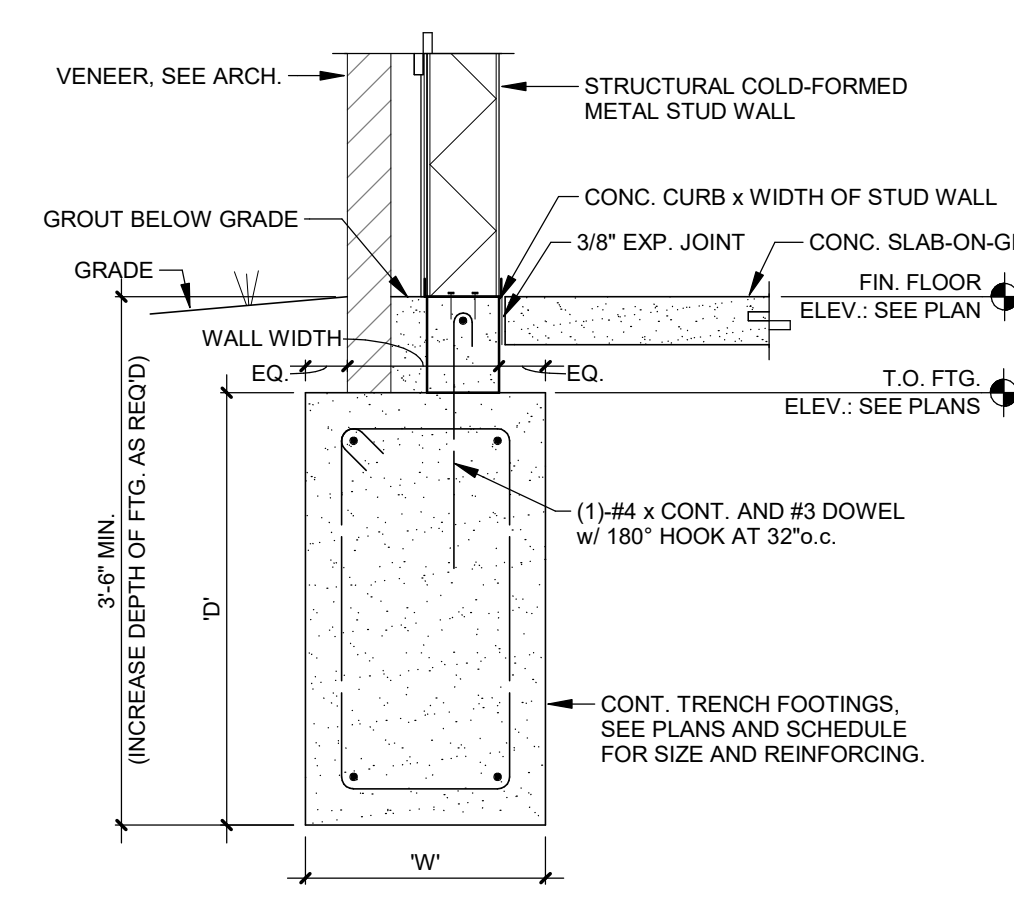


13 DETAIL

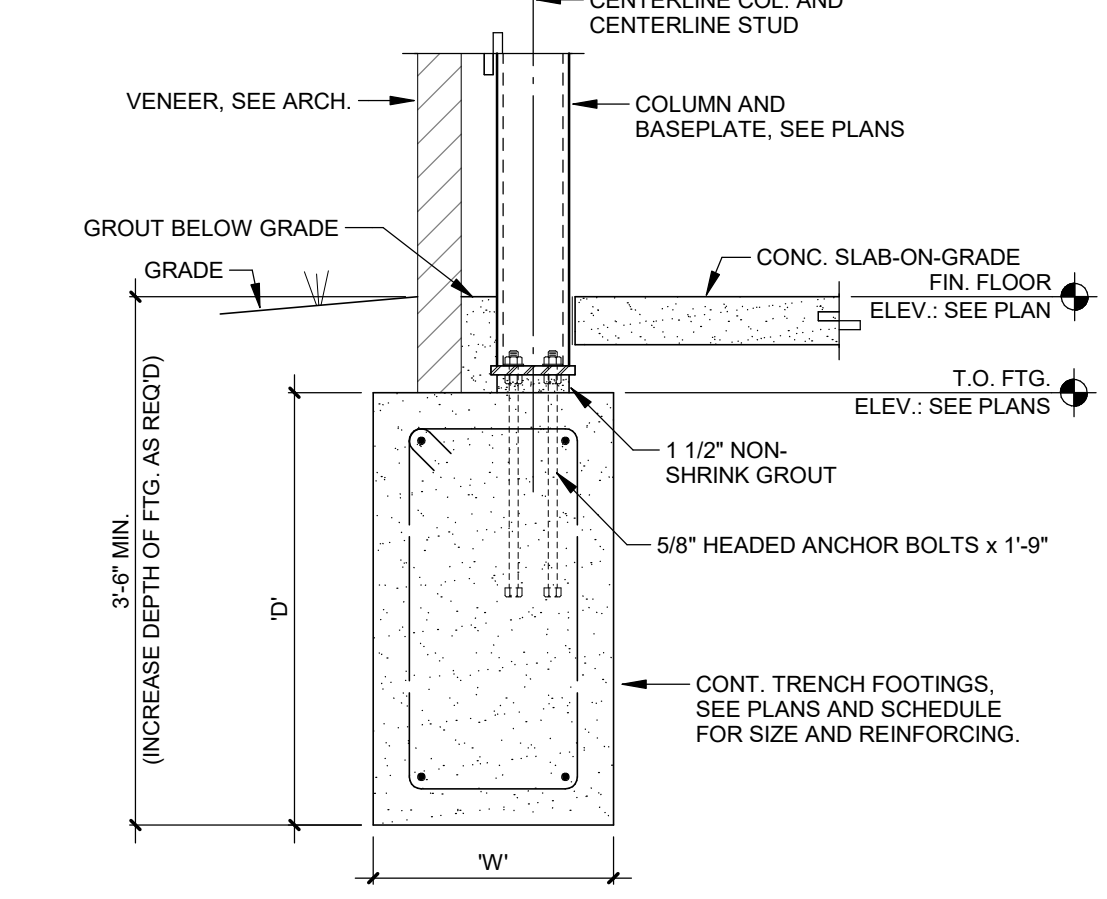
1 1/2" = 1'-0" SHEET: A5.2

FOOTING SCHEDULE					
MARK	SIZE		REINFORCING	REMARKS	
	W	L			
CF1-0H	1'-0"	CONC.	3'-2"	(1)#5 TOP & BOTT. w/ #4 VERT. AT 32" c.c.	DO NOT SUPPORT ON GEOTIEP
CF1-4D	1'-4"	CONC.	2'-0"	(2)#5 TOP & BOTT. w/ #3 TIES AT 48" c.c.	DO NOT SUPPORT ON GEOTIEP
CF1-4H	1'-4"	CONC.	3'-2"	(2)#5 TOP & BOTT. w/ #3 TIES AT 48" c.c.	GEOTIEP DESIGN FOR 1500 PSF
CF1-8D	1'-8"	CONC.	2'-0"	(2)#5 TOP & BOTT. w/ #3 TIES AT 48" c.c.	
CF1-8H	1'-8"	CONC.	3'-2"	(2)#5 TOP & BOTT. w/ #3 TIES AT 48" c.c.	
CF1-10H	1'-10"	CONC.	3'-2"	(2)#5 TOP & BOTT. w/ #3 TIES AT 48" c.c.	
CF3-0H	2'-0"	CONC.	3'-2"	(2)#5 TOP & BOTT. w/ #3 TIES AT 48" c.c.	
CF3-0D	3'-0"	CONC.	2'-0"	(3)#5 TOP & BOTT. w/ #3 TIES AT 48" c.c.	
CF3-0H	3'-0"	CONC.	3'-2"	(3)#5 TOP & BOTT. w/ #3 TIES AT 48" c.c.	
CF4-0H	4'-0"	CONC.	3'-2"	(2)#5 TOP & BOTT. w/ #3 TIES AT 48" c.c.	
CF5-0H	5'-0"	CONC.	3'-2"	(5)#5 TOP & BOTT. w/ #3 TIES AT 24" c.c.	
CF5-0H	6'-0"	CONC.	3'-2"	(6)#5 TOP & BOTT. w/ #3 TIES AT 24" c.c.	
PF3-0H	3'-0"	3'-0"	3'-2"	(4)#4 E.W. TOP & BOTT.	
PF3-4D	3'-6"	3'-6"	2'-0"	(4)#4 E.W. TOP & BOTT.	
PF4-0D	4'-0"	4'-0"	2'-0"	(4)#4 E.W. TOP & BOTT.	
PF4-0H	4'-0"	4'-0"	3'-2"	(4)#4 E.W. TOP & BOTT.	
PF4-4D	4'-6"	4'-6"	2'-0"	(5)#4 E.W. TOP & BOTT.	
PF4-4H	4'-6"	4'-6"	3'-2"	(5)#4 E.W. TOP & BOTT.	
PF5-0D	5'-0"	5'-0"	2'-0"	(5)#4 E.W. TOP & BOTT.	
PF5-0H	5'-0"	5'-0"	3'-2"	(5)#4 E.W. TOP & BOTT.	
PF5-4D	5'-6"	5'-6"	2'-0"	(6)#4 E.W. TOP & BOTT.	
PF5-4H	5'-6"	5'-6"	3'-2"	(6)#4 E.W. TOP & BOTT.	
PF6-0D	6'-0"	6'-0"	2'-0"	(7)#7 E.W. TOP & BOTT.	
PF6-0H	6'-0"	6'-0"	3'-2"	(7)#7 E.W. TOP & BOTT.	
PF6-4D	6'-6"	6'-6"	2'-0"	(8)#7 E.W. TOP & BOTT.	
PF6-4H	6'-6"	6'-6"	3'-2"	(8)#7 E.W. TOP & BOTT.	
PF7-0D	7'-0"	7'-0"	2'-0"	(9)#7 E.W. TOP & BOTT.	
PF7-0H	7'-0"	7'-0"	3'-2"	(9)#7 E.W. TOP & BOTT.	
PF7-4D	7'-6"	7'-6"	2'-0"	(8)#7 E.W. TOP & BOTT.	
PF8-0D	8'-0"	8'-0"	2'-0"	(9)#7 E.W. TOP & BOTT.	
PF8-0H	8'-0"	8'-0"	3'-2"	(9)#7 E.W. TOP & BOTT.	
PF8-4D	8'-6"	8'-6"	2'-0"	(9)#7 E.W. TOP & BOTT.	
PF8-4H	8'-6"	8'-6"	3'-2"	(9)#7 E.W. TOP & BOTT.	
PF9-0D	9'-0"	9'-0"	2'-0"	(10)#9 E.W. TOP & BOTT.	
PF9-0H	9'-0"	9'-0"	3'-2"	(10)#9 E.W. TOP & BOTT.	
RF101	-	-	2'-3"	#5 AT 12" c.c. TOP & BOTT.	
RF102	6'-0"	6'-0"	3'-2"	#5 AT 12" c.c. TOP & BOTT.	

WALL SCHEDULE					
WALL TYPE	THICKNESS/ SIZE	REINFORCING		REMARKS	
		VERTICAL	HORIZONTAL		
W1	CONCRETE	12"	#5 AT 18" c.c. EA FACE	#5 AT 18" c.c. EA FACE	
W2	CONCRETE	8"	#5 AT 18" c.c.	#5 AT 18" c.c.	
W3	CONCRETE	16"	#5 AT 18" c.c. EA FACE	#5 AT 18" c.c. EA FACE	
W4	MASONRY	8" (NOMINAL)	(1)#5 CENTERED IN CELLS AT 16" c.c.	(2) CONT. #4'S IN KNOCK-OUT BOND BEAMS AT ELEVATION 127'-8 5/8", 139'-0 5/8", 149'-8 5/8", 159'-8 5/8", and 171'-8 5/8"	GROUT WALL SOLID - HORIZONTAL 9 ga. JOINT REINFORCING AT 16" c.c.
W5A	MASONRY	8" (NOMINAL)	(1)#5 CENTERED IN CELLS AT 16" c.c.	(2) CONT. #4'S IN KNOCK-OUT BOND BEAMS AT ELEVATION 127'-8 5/8", 139'-0 5/8", 149'-8 5/8", and 159'-8 5/8"	GROUT WALL SOLID - HORIZONTAL 9 ga. JOINT REINFORCING AT 16" c.c.
W5B	MASONRY	8" (NOMINAL)	(1)#5 CENTERED IN CELLS AT 16" c.c.	(3) CONT. #4'S IN KNOCK-OUT BOND BEAMS AT ELEVATION 123'-0 5/8", 127'-8 5/8", 139'-0 5/8", 149'-8 5/8", and 159'-8 5/8"	GROUT WALL SOLID - HORIZONTAL 9 ga. JOINT REINFORCING AT 16" c.c.
W6	MASONRY	8" (NOMINAL)	(1)#4 CENTERED IN CELLS AT 48" c.c.	9 ga. JOINT REINF. AT 16" c.c.	
W7	MASONRY	8" (NOMINAL)	(1)#5 CENTERED IN CELLS AT 32" c.c.	9 ga. JOINT REINF. AT 16" c.c.	
W8	CONCRETE	12"	#6 AT 12" c.c. EA FACE	#5 AT 18" c.c. EA FACE	

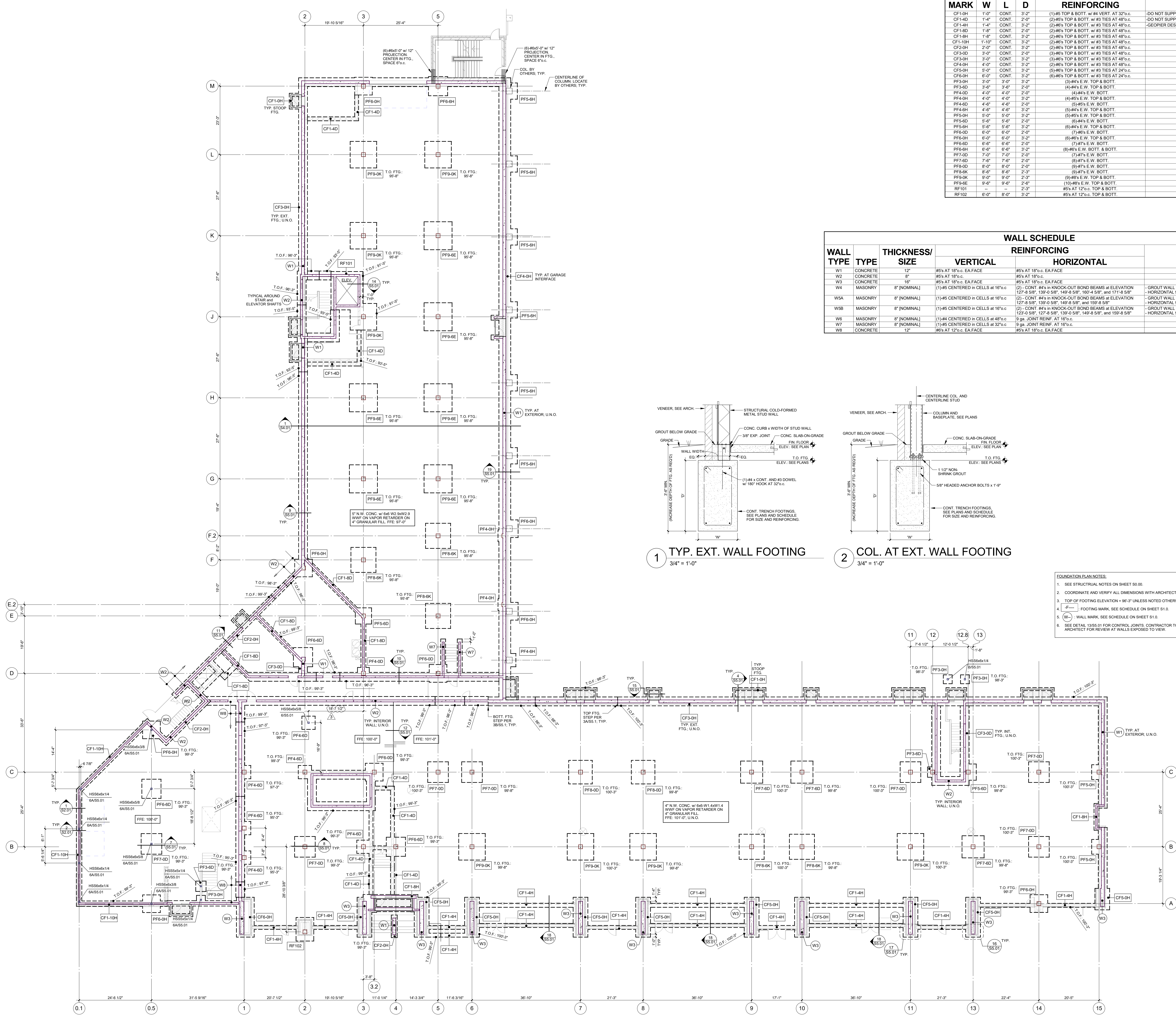


1 TYP. EXT. WALL FOOTING
 3/4" = 1'-0"



2 COL. AT EXT. WALL FOOTING
 3/4" = 1'-0"

- FOUNDATION PLAN NOTES:
- SEE STRUCTURAL NOTES ON SHEET S0.00.
 - COORDINATE AND VERIFY ALL DIMENSIONS WITH ARCHITECTURAL DRAWINGS AND EXIST. CONDITIONS.
 - TOP OF FOOTING ELEVATION = 96'-3" UNLESS NOTED OTHERWISE. T.O.F. = xx'-x"
 - FOOTING MARK. SEE SCHEDULE ON SHEET S1.0.
 - (W) - WALL MARK. SEE SCHEDULE ON SHEET S1.0.
 - SEE DETAIL 1355.01 FOR CONTROL JOINTS. CONTRACTOR TO SUBMIT CONTROL JOINT LOCATION PLAN TO ARCHITECT FOR REVIEW AT WALLS EXPOSED TO VIEW.



REVISIONS SCHEDULE		
MARK	DATE	DESCRIPTION
2	7/18/17	Addendum #4
3	8/21/17	ASI 01

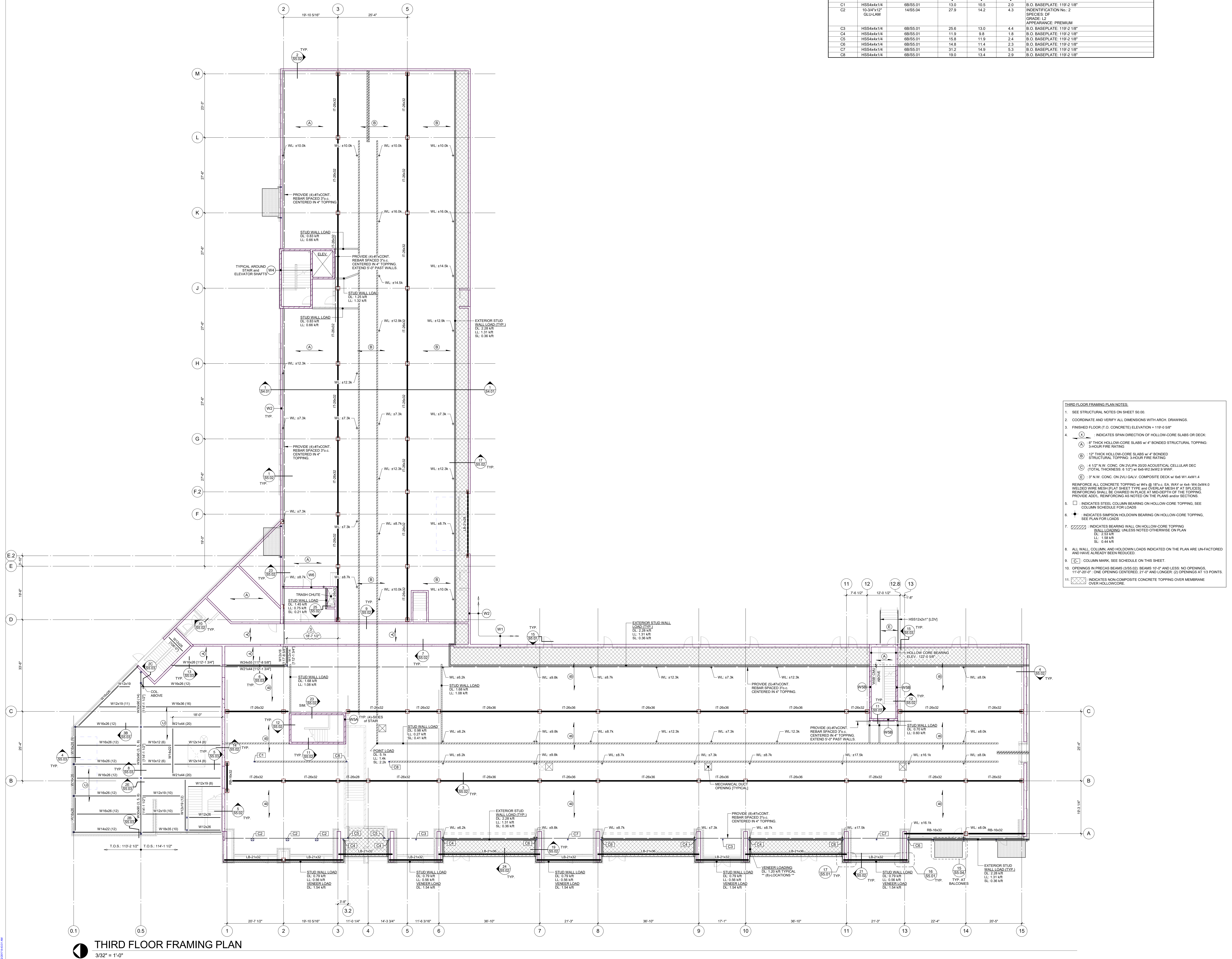
LAVISTA CITY CENTRE
 MIXED USE - SOUTH

PROJECT: F16132 DATE: 04.17.2017

PROV. J. NISSEN
 E-9747
 4/17/2017

FOUNDATION PLAN

COLUMN SCHEDULE							
MARK	TYPE	BASEPLATE DETAIL	DL, kips	LL, kips	SL, kips	REMARKS	
C1	HSS4x4x1/4	6B/SS.01	13.0	10.5	2.0	B.O. BASEPLATE: 119-2 1/8"	
C2	10-3/4"x12" GLU-LAM	14/SS.04		27.9	14.2	IDENTIFICATION NO.: 2 SPECIES: DF GRADE: L2 APPEARANCE: PREMIUM	
C3	HSS4x4x1/4	6B/SS.01	25.6	13.0	4.4	B.O. BASEPLATE: 119-2 1/8"	
C4	HSS4x4x1/4	6B/SS.01	11.9	9.8	1.8	B.O. BASEPLATE: 119-2 1/8"	
C5	HSS4x4x1/4	6B/SS.01	15.8	11.9	2.4	B.O. BASEPLATE: 119-2 1/8"	
C6	HSS4x4x1/4	6B/SS.01	14.6	11.4	2.3	B.O. BASEPLATE: 119-2 1/8"	
C7	HSS4x4x1/4	6B/SS.01	31.2	14.9	5.3	B.O. BASEPLATE: 119-2 1/8"	
C8	HSS4x4x1/4	6B/SS.01	19.0	13.4	2.9	B.O. BASEPLATE: 119-2 1/8"	



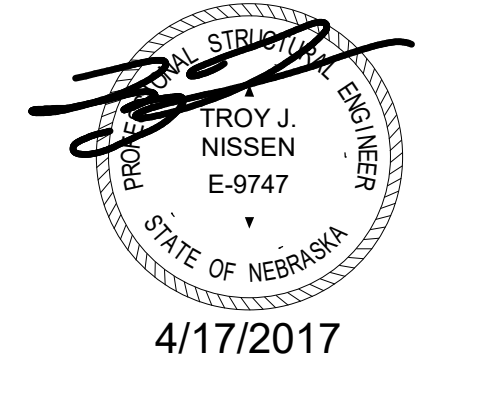
- THIRD FLOOR FRAMING PLAN NOTES:**
- SEE STRUCTURAL NOTES ON SHEET S0.00.
 - COORDINATE AND VERIFY ALL DIMENSIONS WITH ARCH. DRAWINGS.
 - FINISHED FLOOR (T.O. CONCRETE) ELEVATION + 119-0 5/8"
 - (A) INDICATES SPAN DIRECTION OF HOLLOW-CORE SLABS OR DECK:
 - (B) 8" THICK HOLLOW-CORE SLABS w/ 4" BONDED STRUCTURAL TOPPING, 3-HOUR FIRE RATING
 - (C) 12" THICK HOLLOW-CORE SLABS w/ 4" BONDED STRUCTURAL TOPPING, 3-HOUR FIRE RATING
 - (D) 4 1/2" N.W. CONC. ON 2x12x4 2020 ACoustICAL CELLULAR DEC (TOTAL THICKNESS 8 1/2" w/ 6#x12@23x9x3 W/W)
 - (E) 3" N.W. CONC. ON 2x12x4 V. COMPOSITE DECK w/ #6 W1.4x11.4
 - REINFORCE ALL CONCRETE TOPPING w/ #4 @ 18" c. EA. WAY or #4x W4.0x4.0 WELDED WIRE MESH (PLAT SHEET TYPE and COVER LAP MESH 8" AT SPLICES)
 - REINFORCING SHALL BE CHAINED IN PLACE AT MIDDEPTH OF THE TOPPING
 - PROVIDE ADDL. REINFORCING AS NOTED ON THE PLANS and/or SECTIONS.
 - (□) INDICATES STEEL COLUMN BEARING ON HOLLOW-CORE TOPPING. SEE COLUMN SCHEDULE FOR LOADS.
 - (◆) INDICATES SIMPSON HOLD-DOWN BEARING ON HOLLOW-CORE TOPPING. SEE PLAN FOR LOADS.
 - (///) INDICATES BEARING WALL ON HOLLOW-CORE TOPPING. WALL LOADING, UNLESS NOTED OTHERWISE ON PLAN: DL: 2.33 k/ft, LL: 1.59 k/ft, SL: 0.44 k/ft.
 - ALL WALL, COLUMN, AND HOLD-DOWN LOADS INDICATED ON THE PLAN ARE UN-FACTORED AND HAVE ALREADY BEEN REDUCED.
 - SEE SCHEDULE ON THIS SHEET.
 - (C) COLUMN MARK. SEE SCHEDULE ON THIS SHEET.
 - OPENINGS IN PRECAST BEAMS (DSS) 2" BEAMS 18" or LESS. NO OPENINGS. 11" or 20" or ONE OPENING CENTERED. 21" or LONGER (1) OPENINGS AT 1/3 POINTS.
 - INDICATES NON-COMPOSITE CONCRETE TOPPING OVER MEMBRANE OVER HOLLOW-CORE.

REVISIONS SCHEDULE

MARK	DATE	DESCRIPTION
1	5/4/17	Addendum #2
2	7/18/17	Addendum #3
3	8/21/17	ASI 01

**LAVISTA CITY CENTRE
MIXED USE - SOUTH**

PROJECT: P16132 DATE: 04/17/2017



**THIRD FLOOR
FRAMING PLAN**

THIRD FLOOR FRAMING PLAN
3/32" = 1'-0"