



ARCHITECT'S SUPPLEMENTAL INSTRUCTIONS

Project:	Lumberyard District – Buildings 2, 6, 8 & 9 Omaha, NE	Initiated By		Distributed To	
Project Number:	15927	<input type="checkbox"/>	Owner	<input checked="" type="checkbox"/>	
Owner:	Lanoha Development	<input type="checkbox"/>	Architect	<input checked="" type="checkbox"/>	
To Contractor:	Overland Constructors 5036 South 135 th Street Omaha, NE 68145	<input type="checkbox"/>	Contractor	<input checked="" type="checkbox"/>	
		<input checked="" type="checkbox"/>	Consultant	<input checked="" type="checkbox"/>	
		<input type="checkbox"/>	Field	<input type="checkbox"/>	
		<input type="checkbox"/>	Other	<input type="checkbox"/>	
Supplemental Instruction No.:	004				
Date:	July 8, 2016				
Contract Date:	February 15, 2016				
Contract For:	New Construction				
By:	Holland Basham Architects				

The Work shall be carried out in accordance with the following supplemental instructions issued in accordance with the Contract Documents without change in Contract Sum or Contract Time. Prior to proceeding in accordance with these instructions, indicate your acceptance of these instructions for minor change to the Work as consistent with the Contract Documents and return a copy to the Architect.

Description: Revise data locations and deck light fixtures in the units.

DRAWINGS:

1. Sheet E6.01 – Enlarged Unit Plans - Electrical
 - a. Revise unit plans as shown in the attached Sheet E6.01.

2. Sheet E6.02 – Enlarged Unit Plans - Electrical
 - a. Revise unit plans as shown in the attached Sheet E6.02.

Attachment:

Sheet E6.01
Sheet E6.02

Mike Eckmann

ARCHITECT

119 S. 49th Ave, Omaha, NE 68132

Address

By

7/8/2016

Date

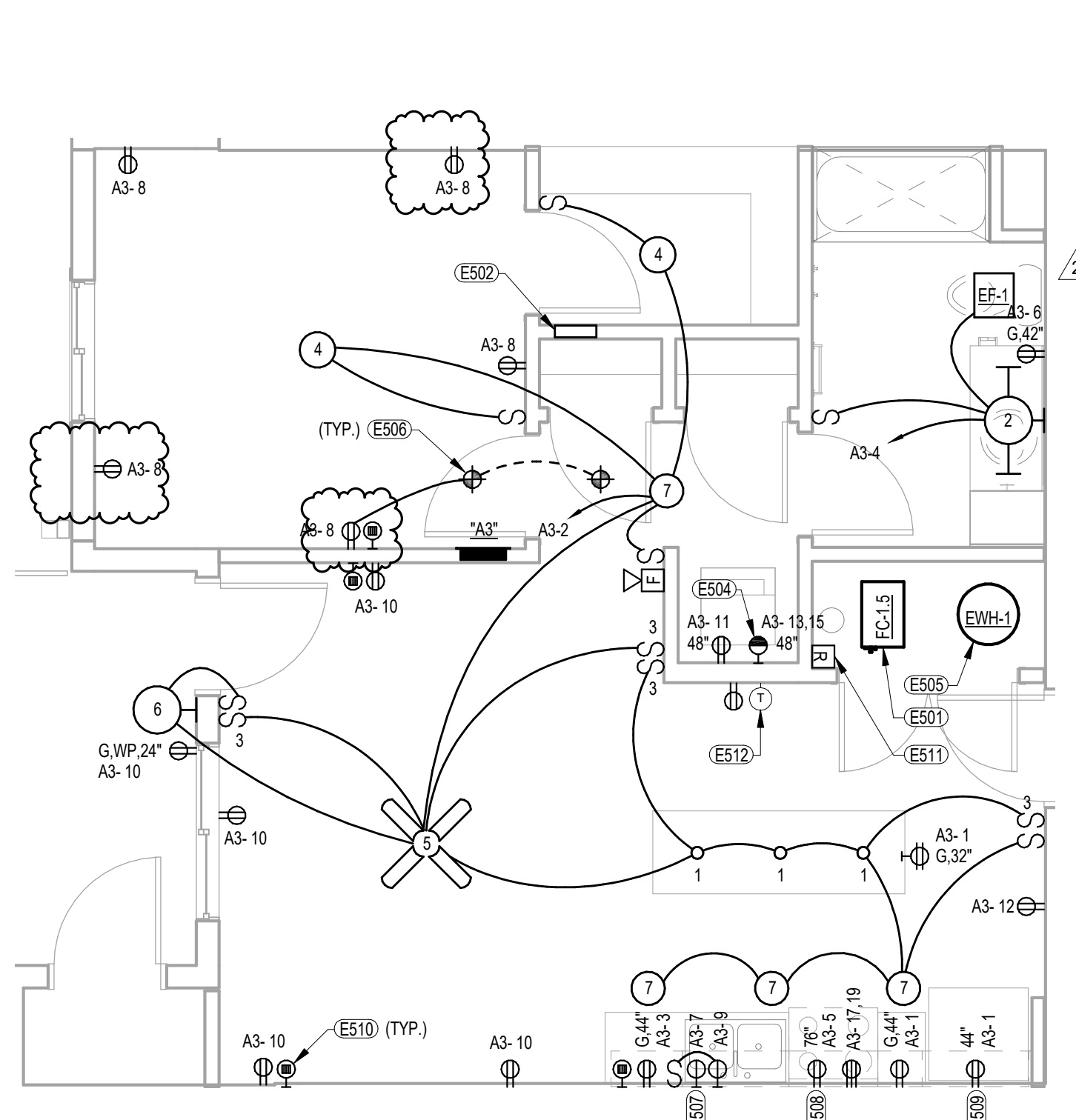
CONTRACTOR

Address

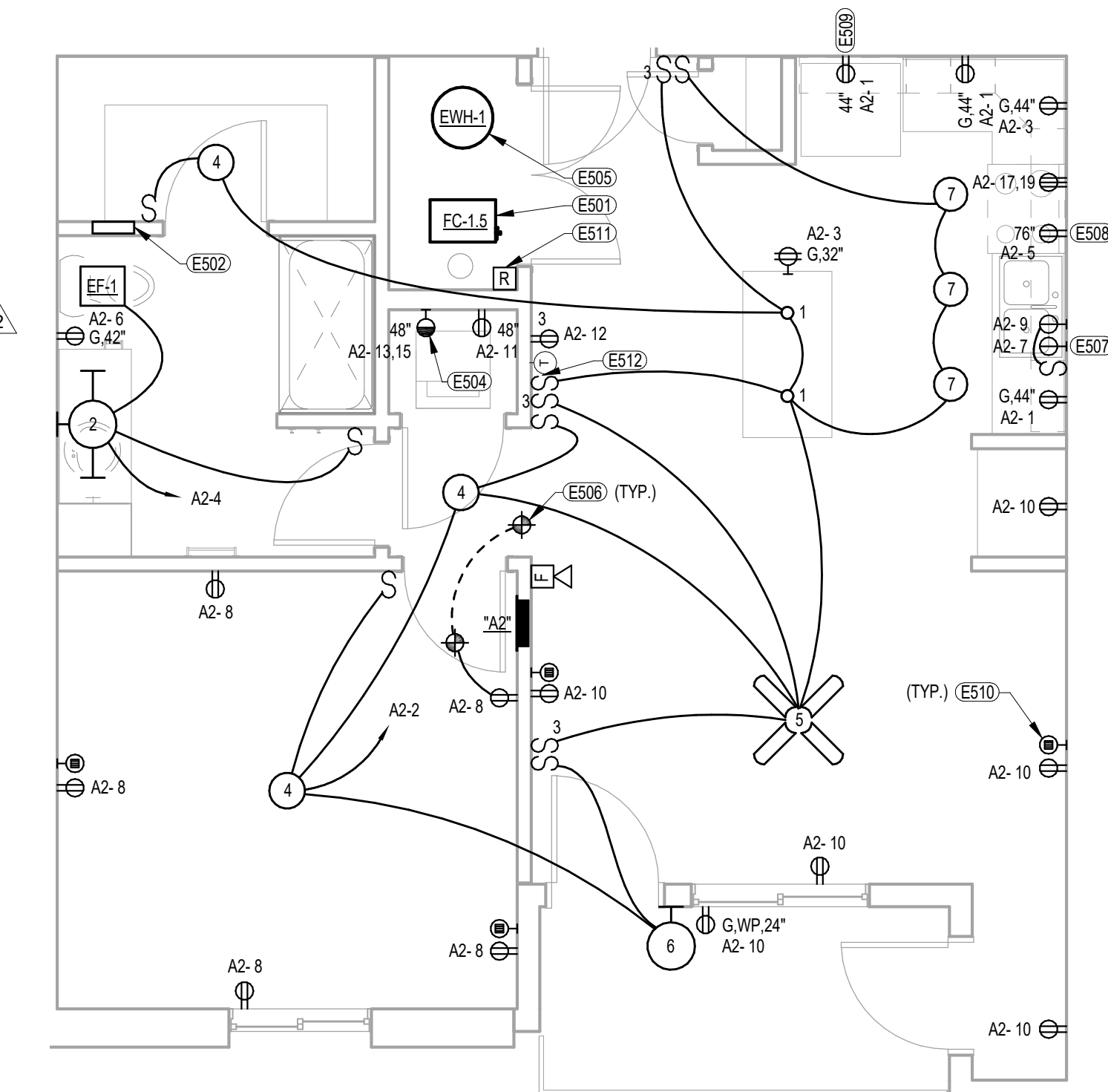
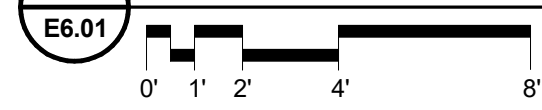
By

Date

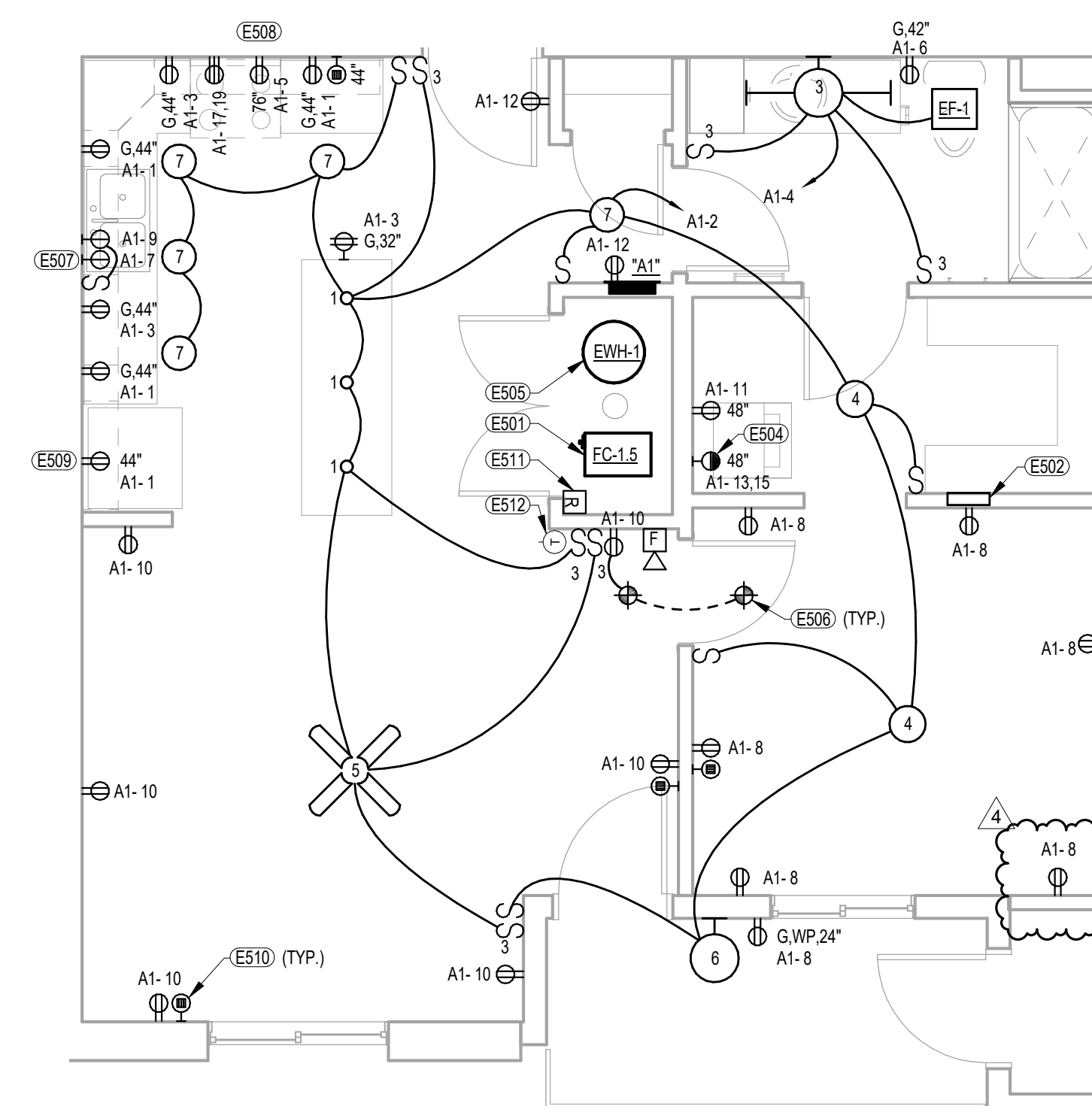
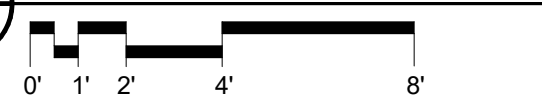
HOLLAND BASHAM ARCHITECTS



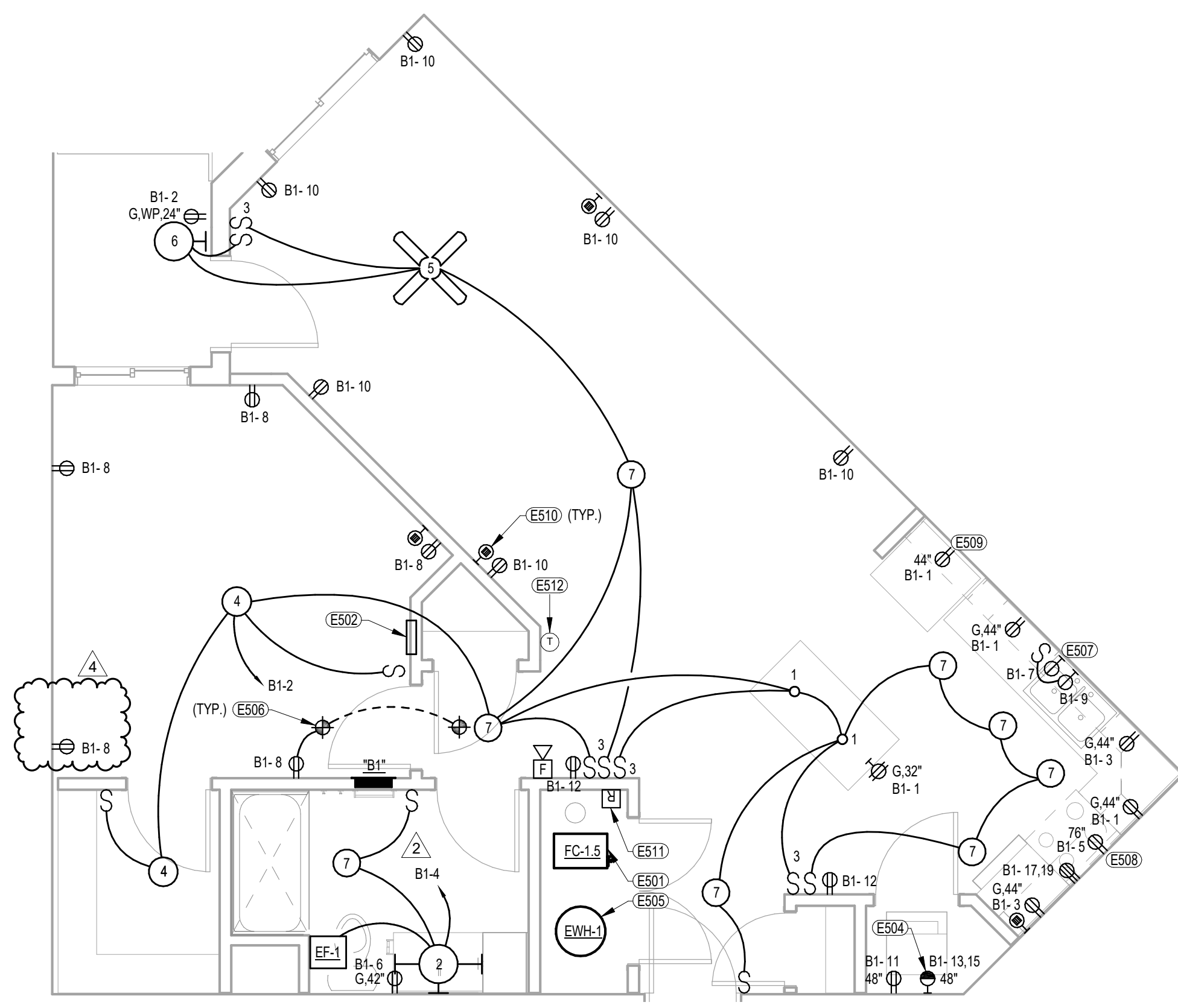
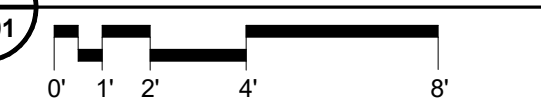
3 ENLARGED TYPICAL UNIT A3 - ELECTRICAL



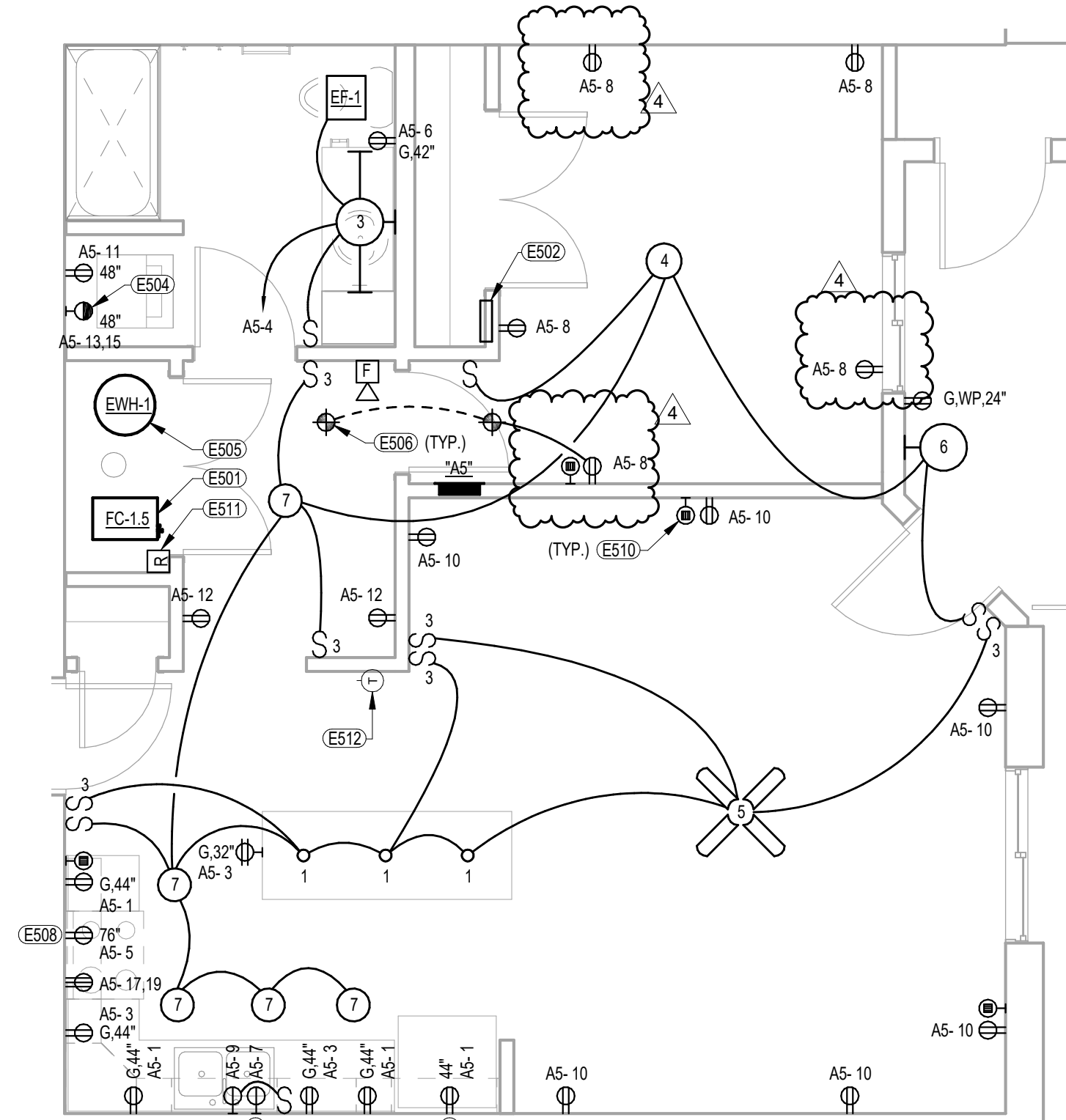
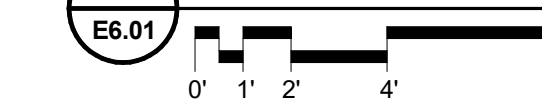
2 ENLARGED TYPICAL UNIT A2 - ELECTRICAL



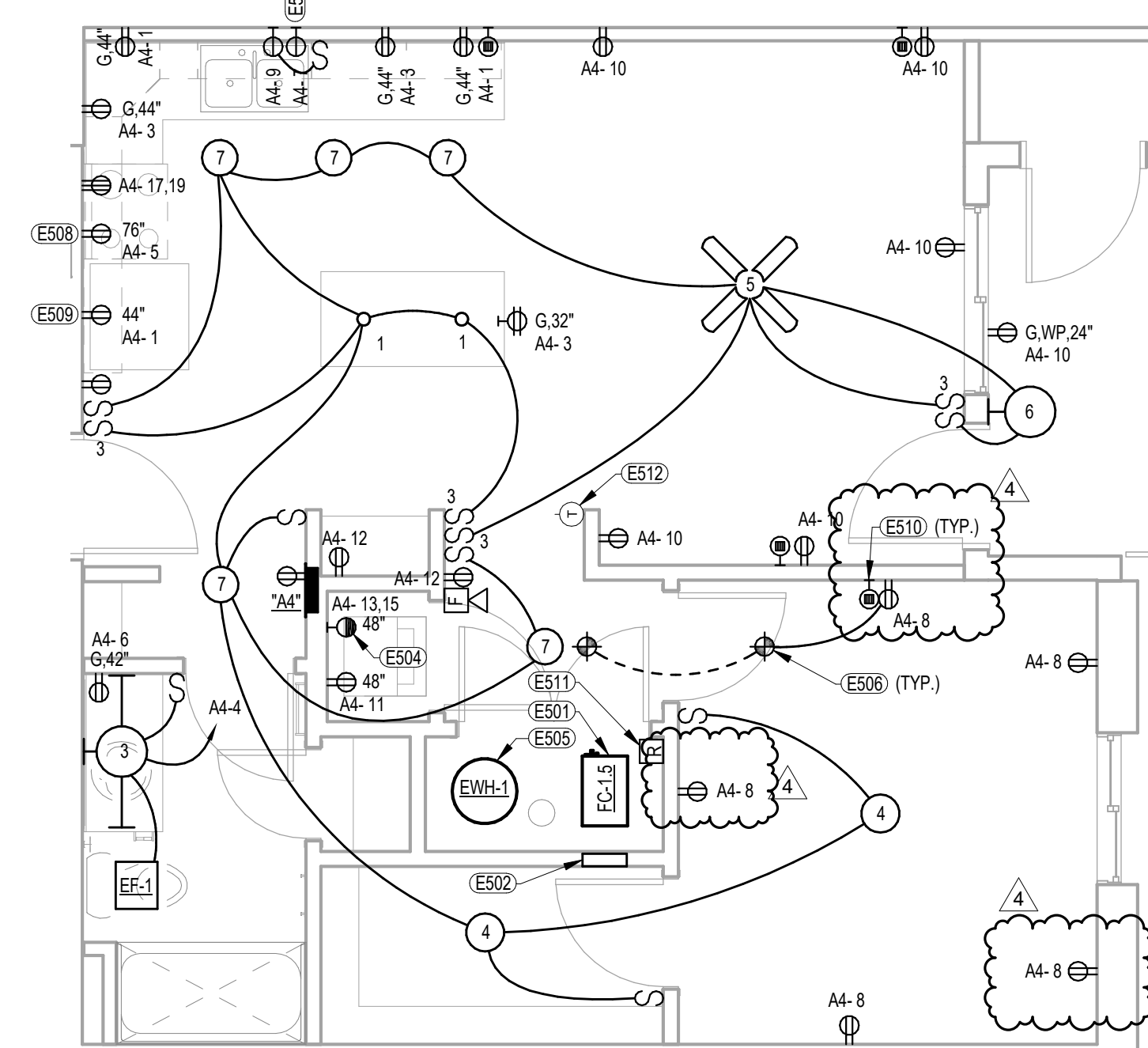
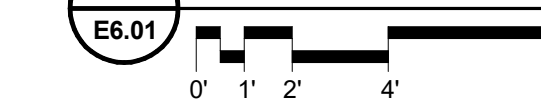
1 ENLARGED TYPICAL UNIT A1 - ELECTRICAL



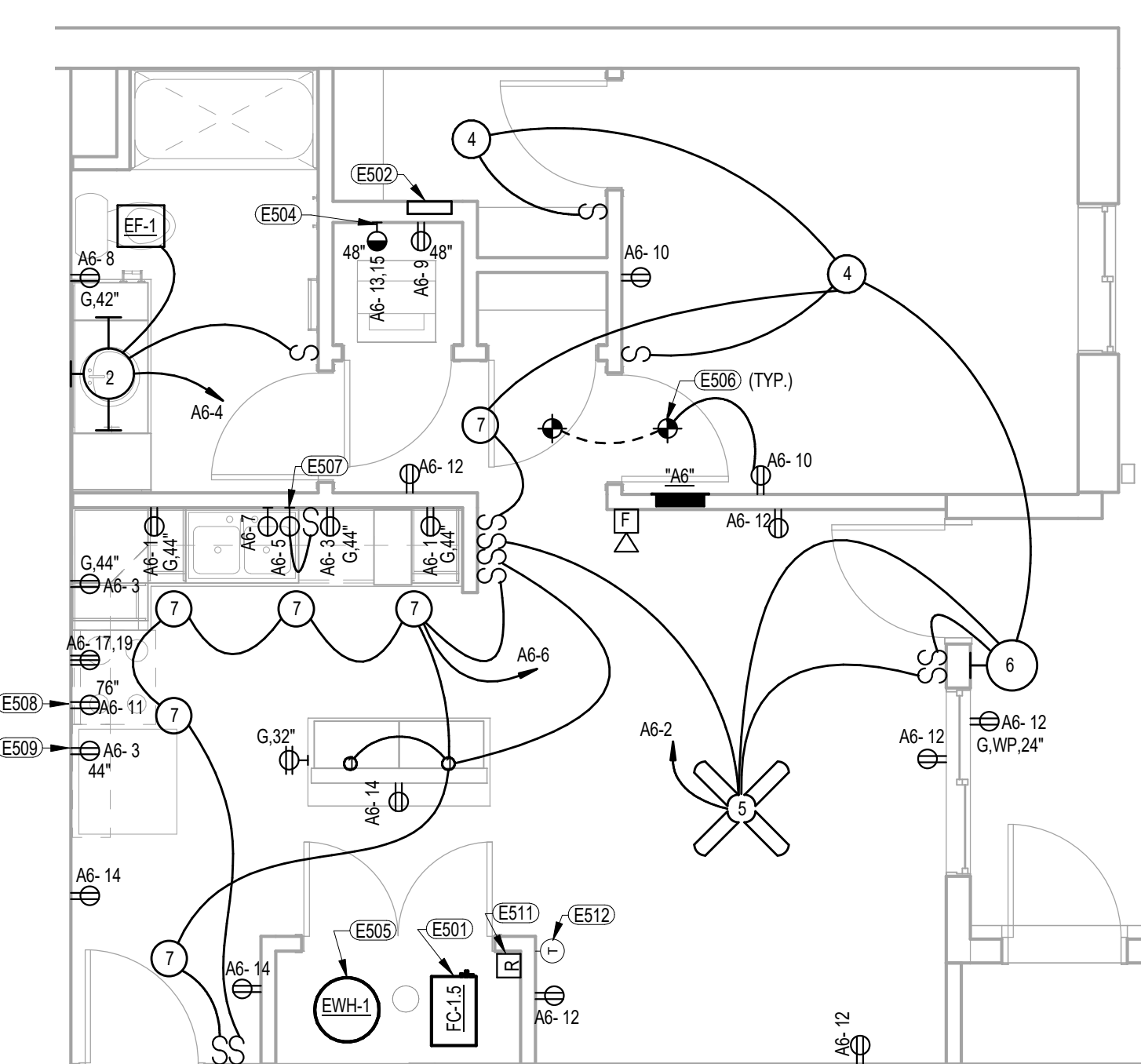
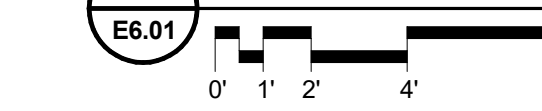
6 ENLARGED TYPICAL UNIT B1 - ELECTRICAL



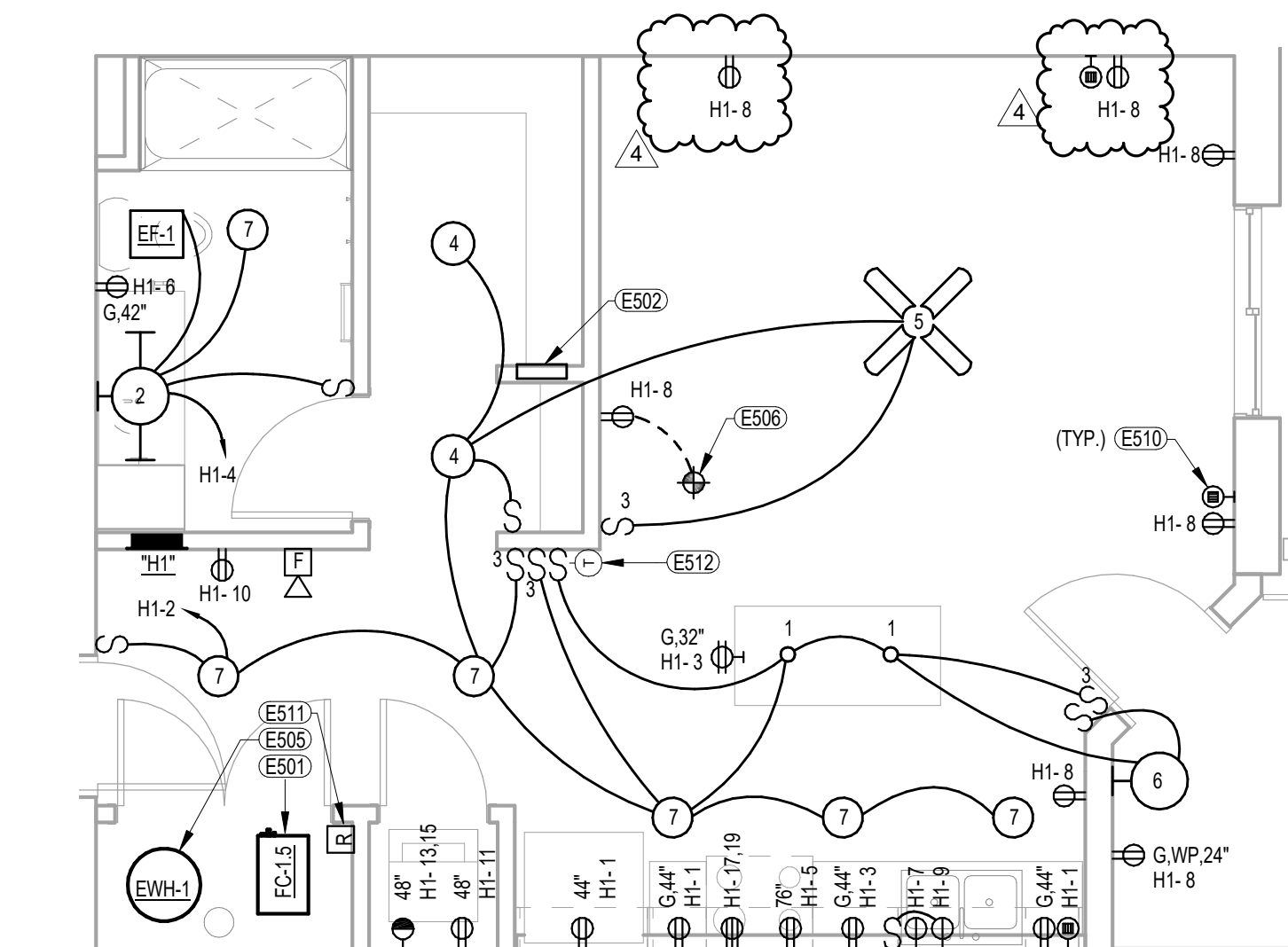
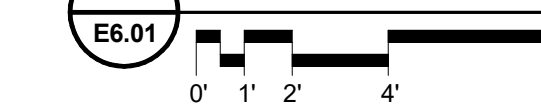
5 ENLARGED TYPICAL UNIT A5 - ELECTRICAL



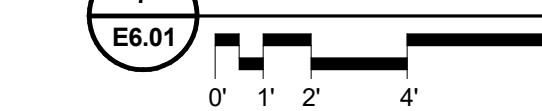
4 ENLARGED TYPICAL UNIT A4 - ELECTRICAL



8 ENLARGED TYPICAL UNIT A6 - ELECTRICAL



7 ENLARGED TYPICAL UNIT H1 - ELECTRICAL



GENERAL NOTES

- A. MINIMUM SIZE FOR BRANCH CIRCUIT CONDUITS SHALL BE 1/2" - SEE DRAWINGS FOR AREAS WHERE LARGER CONDUITS ARE REQUIRED.
- B. PROVIDE A GREEN INSULATED GROUND WIRE IN ALL LIGHTING RECEPTACLE AND BRANCH CIRCUITS.
- C. PROVIDE EMT CONDUIT IN MECHANICAL ROOMS AND WHERE EXPOSED TO VIEW.
- D. ALL KITCHEN RECEPTACLES SHALL BE GFI TYPE PER NEC 210.8.
- E. ALL RECEPTACLES WITHIN 6'-0" OF WATER SHALL BE GFI TYPE PER NEC.
- F. VERIFY RECEPTACLE MOUNTING HEIGHTS WITH FINAL CASEWORK AND UNIT FINISH DRAWINGS.
- G. MINIMUM SIZE FOR BRANCH CIRCUIT WIRING SHALL BE #12 AWG FOR 20 AMP CIRCUITS AND #14 FOR 15 AMP CIRCUITS.
- H. VERIFY FINAL LOCATION OF WASHER/DRYER PRIOR TO ROUGH-IN. COORDINATE WITH GENERAL CONTRACTOR AND MECHANICAL CONTRACTOR.
- I. COORDINATE DEVICE LOCATIONS BETWEEN LIGHTING AND POWER PLANS. GANG ADJACENT DEVICES WHERE POSSIBLE.
- J. PROVIDE A DEDICATED NEUTRAL CONDUCTOR FOR EACH BRANCH CIRCUIT PER NEC 210.4(B).
- K. UNITS INDICATED ARE TYPICAL. COORDINATE RECEPTACLE LOCATIONS WITH ACTUAL FIELD MEASUREMENTS TO COMPLY WITH NEC SPACING REQUIREMENTS. VERIFY KITCHEN APPLIANCE LOCATIONS WITH OWNER AND ADJUST ACCORDINGLY.
- L. PROVIDE AFCI BREAKERS FOR ALL 15- AND 20-AMP BRANCH CIRCUITS PER NEC 210.12(B).
- M. SEE "APARTMENT UNIT ELECTRICAL SYMBOLS" ON SHEET E5-1 FOR ADDITIONAL INFORMATION.
- N. DO NOT MOUNT DEVICES BACK-TO-BACK.
- O. SMOKE DETECTORS SHALL NOT BE INSTALLED WITHIN 36" OF A HVAC DIFFUSER OR RETURN AIR GRILLE PER NFPA 72. COORDINATE REQUIREMENTS WITH STATE FIRE MARSHALL.

KEYNOTES

- E501 FAN COIL PROVIDED WITH FACTORY DISCONNECT/AIRCIRCUIT BREAKER. PROVIDE ELECTRICAL CONNECTION TO MECHANICAL UNITS. PROVIDE 280-#10G-3/4"C. FOR ALL FC-1.5. PROVIDE 280-#10G-1"C. FOR ALL FC-2. SEE PANEL SCHEDULES FOR REQUIRED CIRCUIT BREAKER SIZES. CONNECT FIRE SMOKE DAMPER ON OUTSIDE AIR DUCT TO NEAREST LIFE SAFETY PANEL. PROVIDE SMOKE DUCT DETECTOR ON EACH OUTSIDE AIR DUCT IN EACH UNIT. SEE PANEL SCHEDULES AND DETAIL WET-01.
- E502 TELEPHONE / CATV TERMINAL BOX AND STANDARD 4 X 8 VOICE MODULE. SUTTLE SOHO ACCESS ENCLOSURE #SAE-14PC WITH SAM-V8 OR EQUAL. FLUSH MOUNT IN WALL AT 5'-0" AT F. PROVIDE DUPLEX RECEPTACLE INSIDE CABINET AND CIRCUIT TO NEAREST HALLWAY RECEPTACLE CIRCUIT. PROVIDE 1' EMT CONCEALED IN WALL/CELING TO NEAREST TELECOMMUNICATIONS BOARD.
- E504 PROVIDE 120V POWER CONNECTION TO IN-LINE CLOTHES DRYER BOOSTER FAN WHERE REQUIRED. VERIFY FAN LOCATION WITH MECHANICAL CONTRACTOR. PROVIDE SINGLE POLE TOGGLE SWITCH DISCONNECT AT FAN. COORDINATE SWITCH AND FAN ACCESS MEANS WITH GENERAL CONTRACTOR.
- E505 PROVIDE 2-#8, #10G-3/4"C FOR EWH. CIRCUIT BREAKER SHALL HAVE PROVISION FOR LOCKING IN THE OPEN POSITION. SEE PANEL SCHEDULE FOR RATINGS.
- E506 PROVIDE FIRE ALARM SINGLE STATION SMOKE DETECTORS WITHIN UNIT. PROVIDE INTERLOCK PER NFPA REQUIREMENTS.
- E507 RECEPTACLE FOR DISHWASHER/GARBAGE DISPOSAL. SEE DETAIL WET-01.
- E508 RECEPTACLE FOR MICROWAVE OR OTR HOOD. VERIFY EXACT MOUNTING HEIGHT WITH CABINETS AND APPLIANCES. RECEPTACLE SHALL BE CONNECTED AS FEED-THRU FROM ADJACENT COUNTERTOP GFCI.
- E510 PROVIDE SINGLE-GANG CADDY RING FOR FUTURE LOW VOLTAGE WIRING.
- E511 PROVIDE A FLUSH MOUNTED FIRE ALARM SYSTEM ADDRESSABLE RELAY MODULE WITH WIRING/PROGRAMMING TO SHUT-DOWN HVAC AND EF-1 UNITS IN THE EVENT OF ALARM CONDITION IN RESPECTIVE UNIT.
- E512 PROVIDE SINGLE-GANG CADDY RING FOR T-STAT WIRING FOR FAN COIL UNIT. COORDINATE INSTALLATION HEIGHT WITH MECHANICAL CONTRACTOR.

4	Revision #4-ASI #04	7/5/2016
2	ASI #02	4/21/16

No.	Description	Date
-----	-------------	------

LANOHA DEVELOPMENT COMPANY

LUMBERYARD DISTRICT - BUILDINGS 2, 6, 8 & 9

ENLARGED UNIT PLANS - ELECTRICAL

HOLLAND BASHAM ARCHITECTS
 119 SOUTH 49TH AVENUE
 OMAHA, NEBRASKA 68132
 (402)551-0800

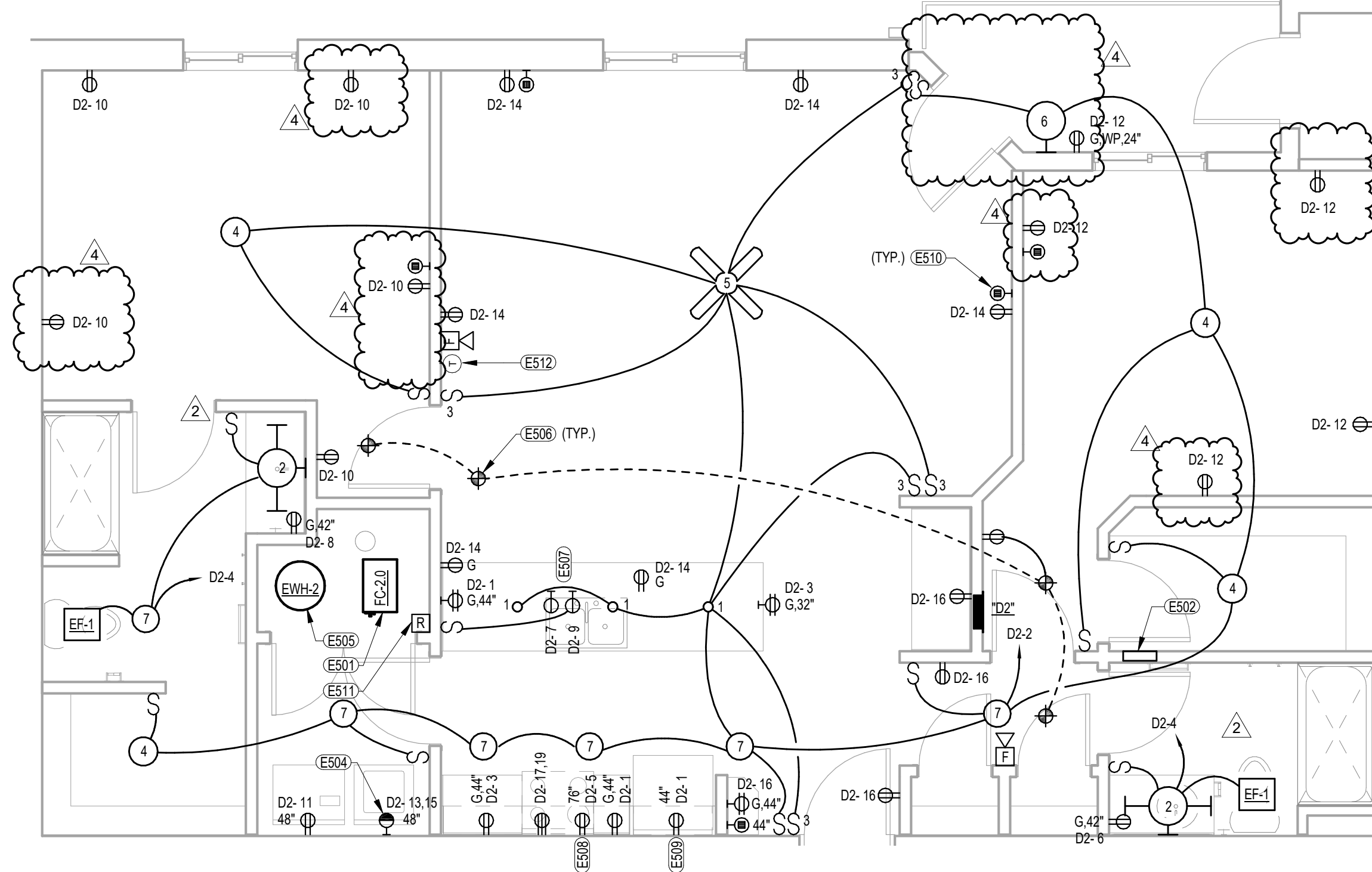
HBA

MEI PROJECT NO: 14424
morrissey engineering inc
 mechanical | electrical | lighting | technology | commissioning
 4940 North 119th Street
 Omaha, NE 68164
 P: 402.491.4144
 www.morrisseyengineering.com

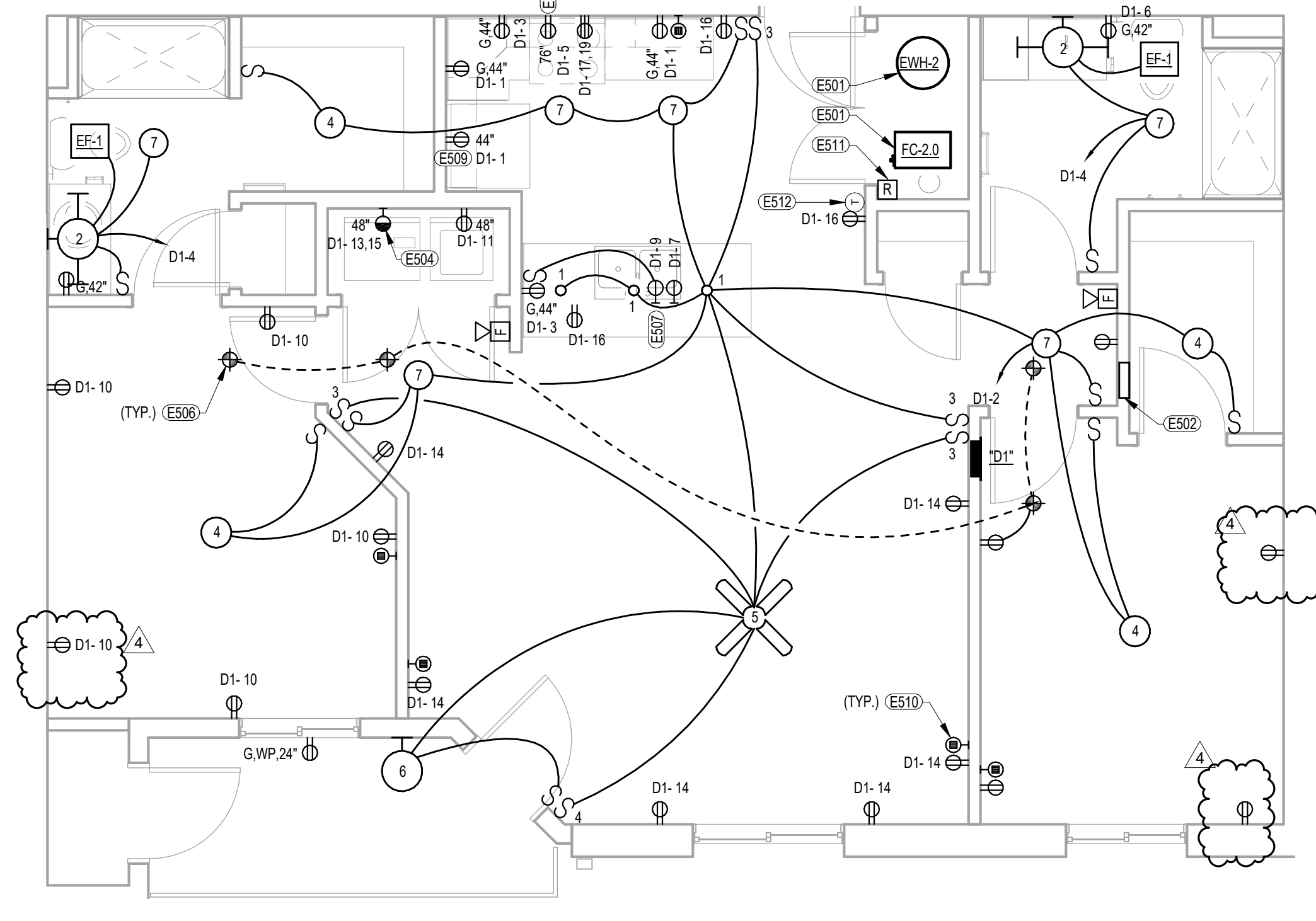
© copyright permission to reproduce all or part of this drawing is hereby granted solely for the limited purpose of construction of this project or archiving. unauthorized copying, disclosure or construction use without written permission of morrissey engineering, inc. is prohibited by copyright law.
 note: do not scale drawings. verify all dimensions and clearances from architectural, structural, shop and other appropriate drawings or at site. lay out and coordinate all work prior to installation to provide clearances required for operation, maintenance, and codes and verify non-interference with other work. do not fabricate prior to verification of clearance for all trades.

PROJECT: 15927
 DATE: 2/15/2016
 SHEET: E6.01

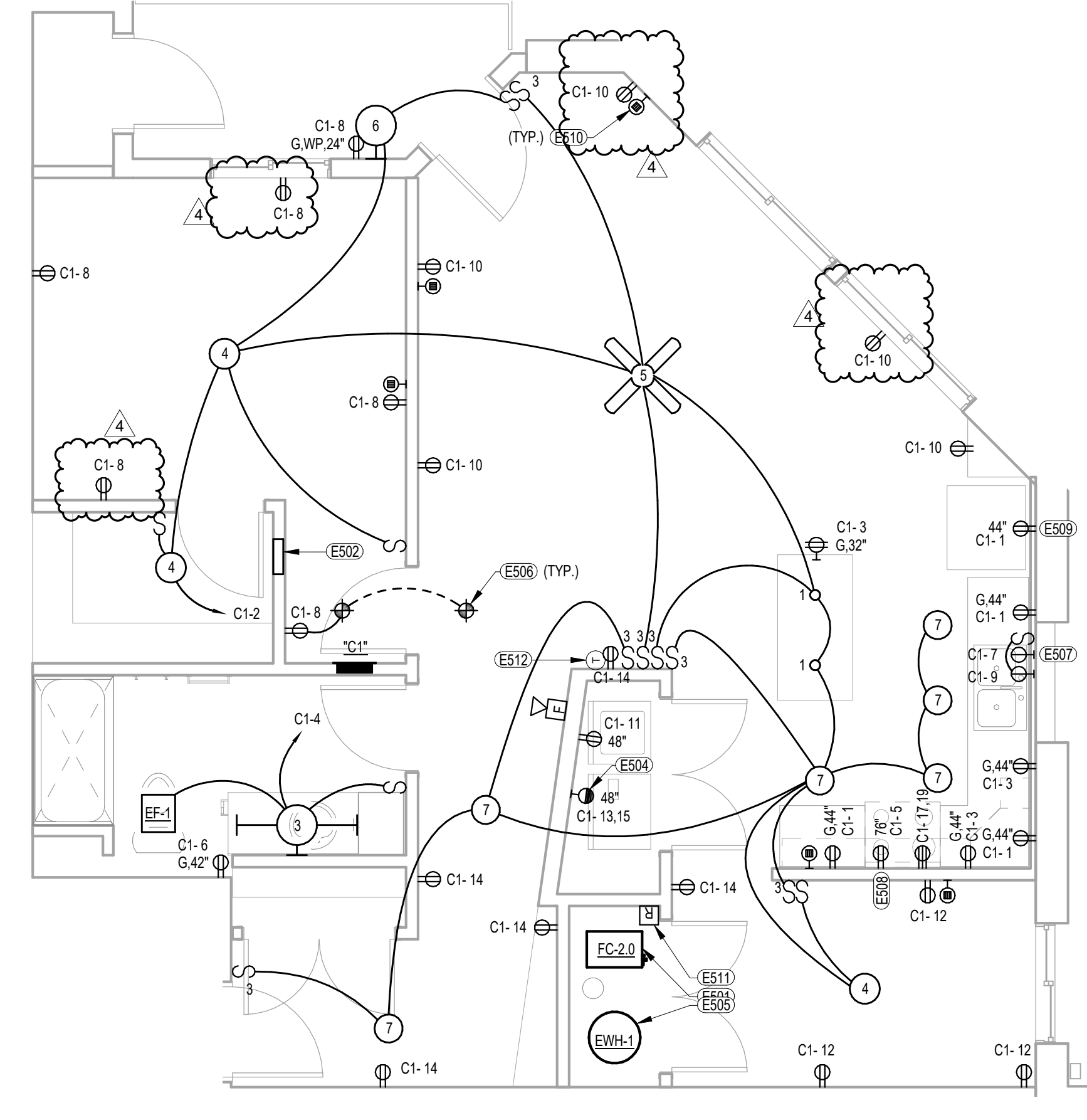
C:\Users\jgonnell\Documents\14424_Lanoha common sheets_MEI_F021E_G008ell.rvt 7/5/2016 2:04:36 PM



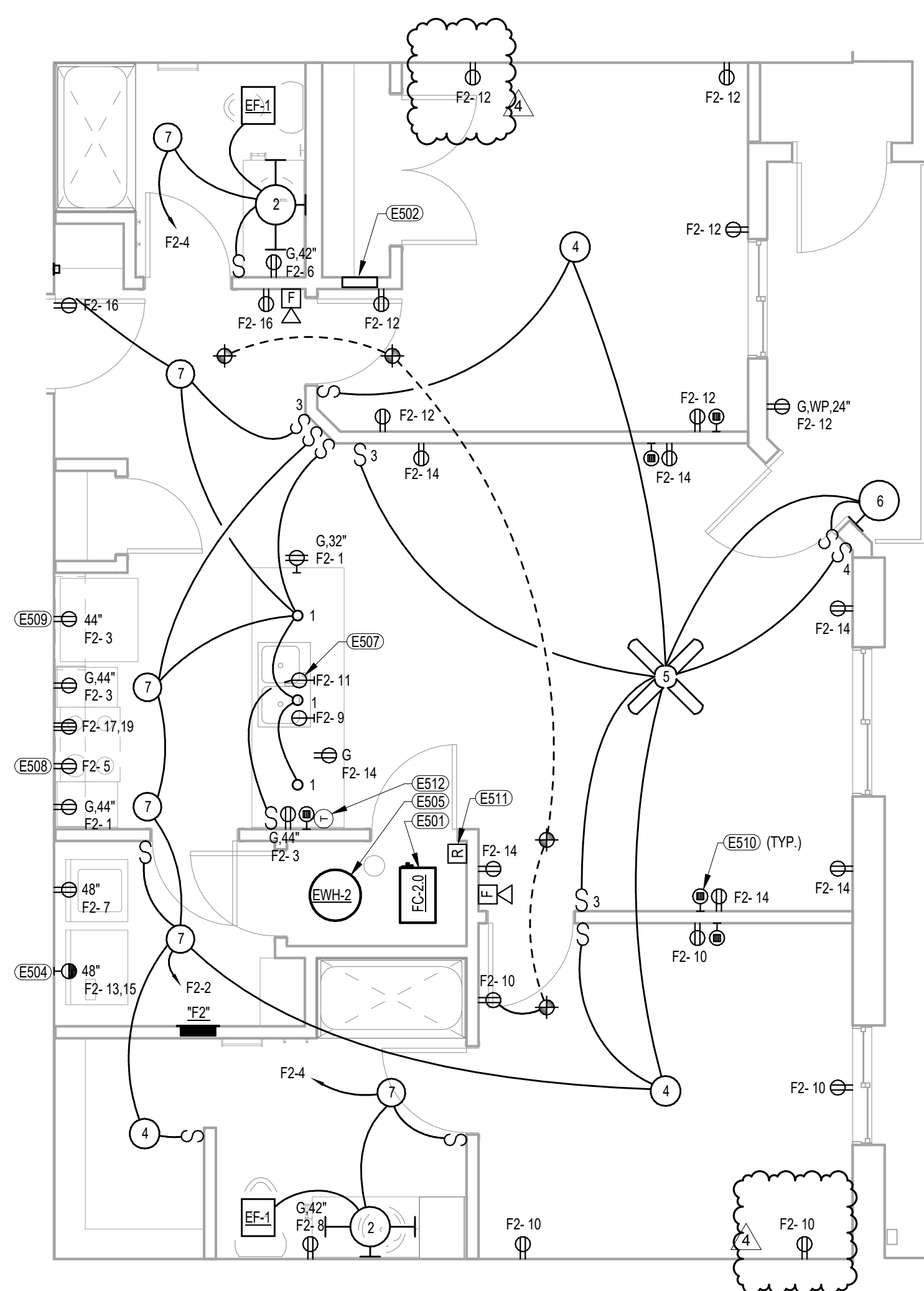
3 ENLARGED TYPICAL UNIT D2 - ELECTRICAL



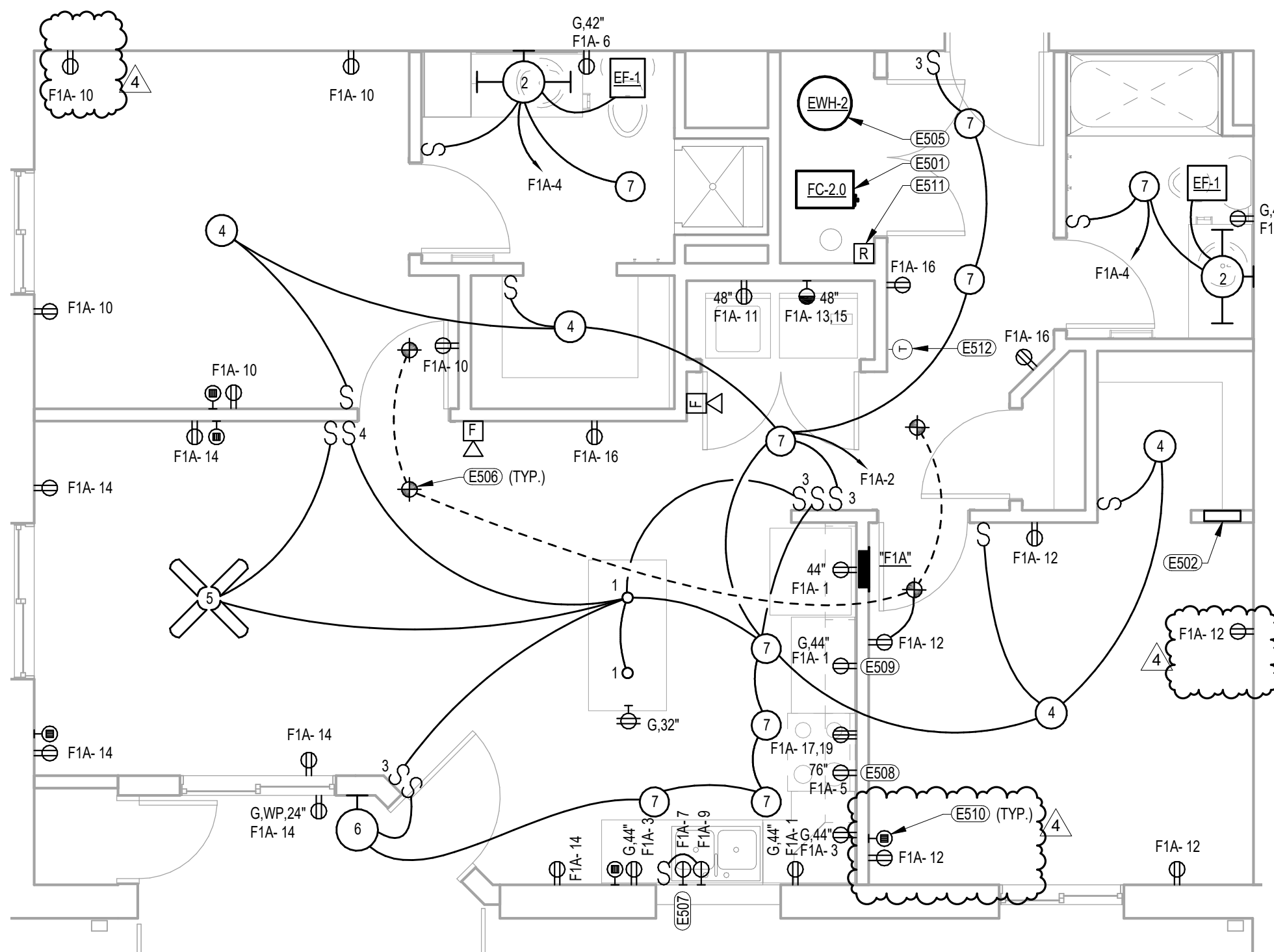
2 ENLARGED TYPICAL UNIT D1 - ELECTRICAL



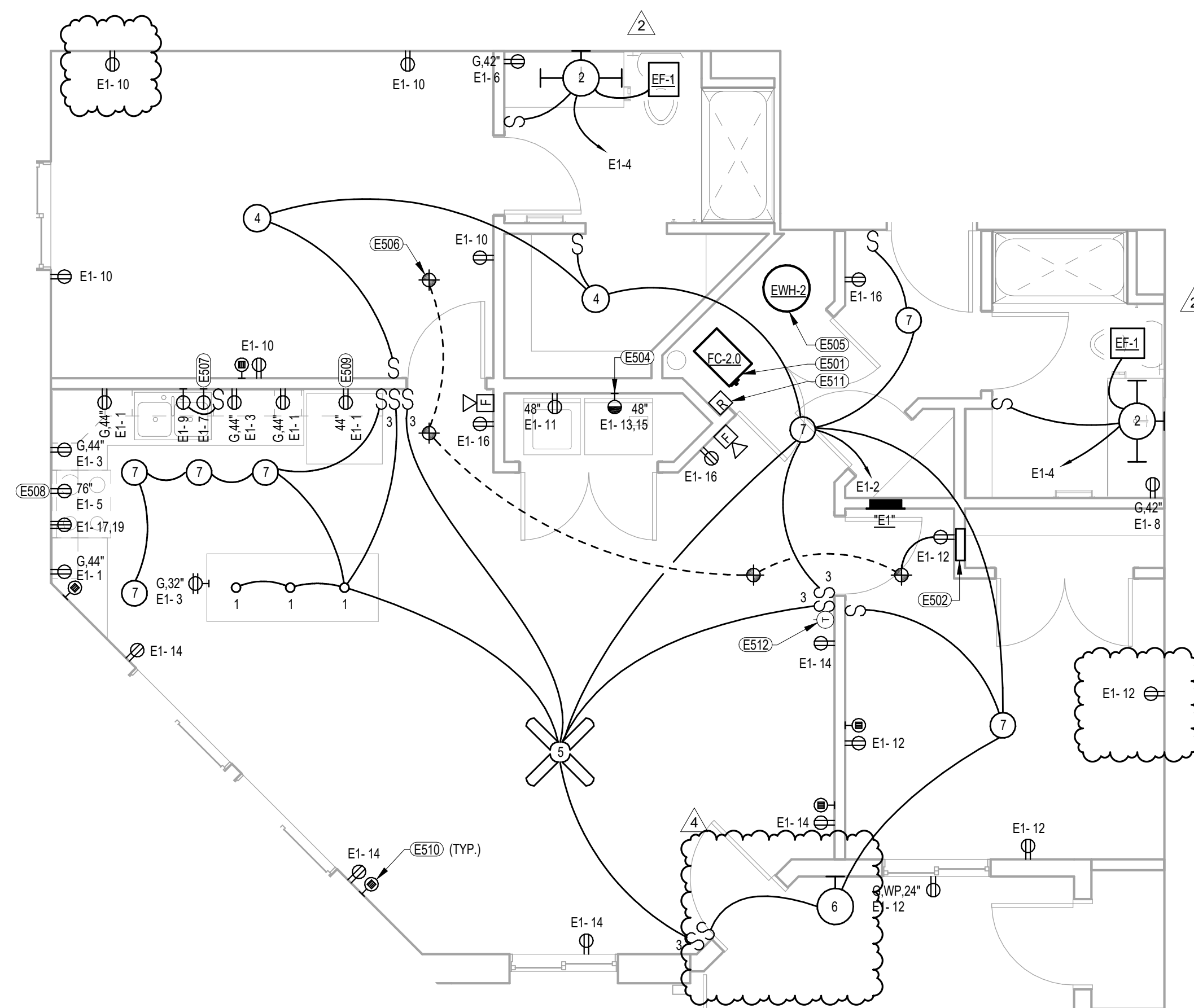
1 ENLARGED TYPICAL UNIT C1 - ELECTRICAL



6 ENLARGED TYPICAL UNIT F2 - ELECTRICAL



5 ENLARGED TYPICAL UNIT F1A - ELECTRICAL



4 ENLARGED TYPICAL UNIT E1 - ELECTRICAL

- GENERAL NOTES**
- MINIMUM SIZE FOR BRANCH CIRCUIT CONDUITS SHALL BE 1/2" SEE DRAWINGS FOR AREAS WHERE LARGER CONDUITS ARE REQUIRED.
 - PROVIDE A GREEN INSULATED GROUND WIRE IN ALL LIGHTING, RECEPTACLE, AND BRANCH CIRCUITS.
 - PROVIDE EMT CONDUIT IN MECHANICAL ROOMS AND WHERE EXPOSED TO VIEW.
 - ALL KITCHEN RECEPTACLES SHALL BE GFI TYPE PER NEC 210.8.
 - ALL RECEPTACLES WITHIN 6'-0" OF WATER SHALL BE GFI TYPE PER NEC.
 - VERIFY RECEPTACLE MOUNTING HEIGHTS WITH FINAL CASEWORK AND UNIT FINISH DRAWINGS.
 - MINIMUM SIZE FOR BRANCH CIRCUIT WIRING SHALL BE #12 AWG FOR 20 AMP CIRCUITS AND #14 FOR 15 AMP CIRCUITS.
 - VERIFY FINAL LOCATION OF WASHER/DRYER PRIOR TO ROUGH-IN. COORDINATE WITH GENERAL CONTRACTOR AND MECHANICAL CONTRACTOR.
 - COORDINATE DEVICE LOCATIONS BETWEEN LIGHTING AND POWER PLANS. GANG ADJACENT DEVICES WHERE POSSIBLE.
 - PROVIDE A DEDICATED NEUTRAL CONDUCTOR FOR EACH BRANCH CIRCUIT PER NEC 210.4(B).
 - UNITS INDICATED ARE TYPICAL. COORDINATE RECEPTACLE LOCATIONS WITH ACTUAL FIELD MEASUREMENTS TO COMPLY WITH NEC SPACING REQUIREMENTS. VERIFY KITCHEN APPLIANCE LOCATIONS WITH OWNER AND ADJUST ACCORDINGLY.
 - PROVIDE AFCI BREAKERS FOR ALL 15- AND 20-AMP BRANCH CIRCUITS PER NEC 210.12(B).
 - SEE "APARTMENT UNIT ELECTRICAL SYMBOLS" ON SHEET E5.1 FOR ADDITIONAL INFORMATION.
 - DO NOT MOUNT DEVICES BACK-TO-BACK.
 - SMOKE DETECTORS SHALL NOT BE INSTALLED WITHIN 36" OF A HVAC DIFFUSER OR RETURN AIR GRILLE PER NFPA 72. COORDINATE REQUIREMENTS WITH STATE FIRE MARSHALL.

- KEYNOTES**
- FAN COIL PROVIDED WITH FACTORY DISCONNECT/CIRCUIT BREAKER. PROVIDE ELECTRICAL CONNECTION TO MECHANICAL UNITS. PROVIDE 288 #10G-34°C. FOR ALL FC-1.5. PROVIDE 288 #10G-1°C. FOR ALL FC-2. SEE PANEL SCHEDULES FOR REQUIRED CIRCUIT BREAKER SIZES. CONNECT FIRE SMOKE DAMPER ON OUTSIDE AIR DUCT TO NEAREST LIFE SAFETY PANEL. PROVIDE SMOKE DUCT DETECTOR ON EACH OUTSIDE AIR DUCT IN EACH UNIT. SEE PANEL SCHEDULES AND DETAIL 4/E7.01.
 - TELEPHONE / CATV TERMINAL BOX AND STANDARD 4 X 8 VOICE MODULE. SUTILE 30X40 ACCESS ENCLOSURE. 85#-8FC WITH 5A/10V OR EQUAL. FLUSH MOUNT IN WALL AT 5'-0" A.F.F. PROVIDE DUPLEX RECEPTACLE INSIDE CABINET AND CIRCUIT TO NEAREST HALLWAY RECEPTACLE CIRCUIT. PROVIDE 1" EMT CONCEALED IN WALL/CEILING TO NEAREST TELECOMMUNICATIONS BOARD.
 - PROVIDE 120V POWER CONNECTION TO IN-LINE CLOTHES DRYER BOOSTER FAN WHERE REQUIRED. VERIFY FAN LOCATION WITH MECHANICAL CONTRACTOR. PROVIDE SINGLE POLE TOGGLE SWITCH DISCONNECT AT FAN. COORDINATE SWITCH AND FAN ACCESS MEANS WITH GENERAL CONTRACTOR.
 - PROVIDE 2-#8, #10G-34°C FOR EWH. CIRCUIT BREAKER SHALL HAVE PROVISION FOR LOCKING IN THE OPEN POSITION. SEE PANEL SCHEDULE FOR RATING.
 - PROVIDE FIRE ALARM SINGLE STATION SMOKE DETECTORS WITHIN UNIT. PROVIDE INTERLOCK PER NFPA REQUIREMENTS.
 - RECEPTACLE FOR DISHWASHER/GARBAGE DISPOSAL. SEE DETAIL 7/E7.01.
 - RECEPTACLE FOR MICROWAVE OR OTR HOOD. VERIFY EXACT MOUNTING HEIGHT WITH CABINETS AND APPLIANCES.
 - RECEPTACLE SHALL BE CONNECTED AS FEED-THRU FROM ADJACENT COUNTERTOP GFCI.
 - PROVIDE SINGLE-GANG CADDY RINGS FOR FUTURE LOW VOLTAGE WIRING.
 - PROVIDE A FLUSH-MOUNTED FIRE ALARM SYSTEM ADDRESSABLE RELAY MODULE WITH WIRING/PROGRAMMING TO SHUT-DOWN HVAC AND EF-1 UNITS IN THE EVENT OF ALARM CONDITION IN RESPECTIVE UNIT. PROVIDE SINGLE-GANG CADDY RING FOR T-STAT WIRING FOR FAN COIL UNIT. COORDINATE INSTALLATION HEIGHT WITH MECHANICAL CONTRACTOR.

No.	Description	Date
4	Revision #4-ASI #04	7/5/2016
2	ASI #02	4/21/16

LANOHA DEVELOPMENT COMPANY

LUMBERYARD DISTRICT - BUILDINGS 2, 6, 8 & 9

ENLARGED UNIT PLANS - ELECTRICAL

HOLLAND BASHAM ARCHITECTS

 119 SOUTH 49TH AVENUE
 OMAHA, NEBRASKA 68132
 (402)551-0800

MEI PROJECT NO: 14424
morrissey engineering inc
 mechanical | electrical | lighting | technology | commissioning
 4940 North 119th Street
 Omaha, NE 68164
 P: 402.491.4144
 www.morrisseyengineering.com

©copyright permission to reproduce all or part of this drawing is hereby granted solely for the limited purpose of construction of this project or activity. unauthorized copying, disclosure or construction use without written permission of morrissey engineering, inc. is prohibited by copyright law.
 note:
 do not scale drawings. verify all dimensions and clearances from architectural, structural, shop and other appropriate drawings or at site. lay out and coordinate all work prior to installation to provide clearances required for operation, maintenance, and codes and verify non-interference with other work. do not fabricate prior to verification of clearance for all trades.

PROJECT: 15927
 DATE: 2/15/2016

 SHEET: **E6.02**

C:\Users\jgonnell\Documents\14424_Lanoha common sheets_MEI_F021E_G008ell.rvt 7/5/2016 2:04:48 PM